



North Carolina Ports Overview

**NC Forestry Association
2022 Annual Conference
Sept. 29, 2022**

North Carolina Ports Fast Facts

Two deep water terminals and one inland port serving the Carolinas

- 5,000+ container gate moves per week
- 300,000 TEU annually
- 4.39M tons of general cargo per year
- 1000 ship calls annually

Financial summary – FY22

- Annual revenue \$68 million
- Annual cash generation \$20+ million
- Profit \$3.7 million
- Directly employs 220 individuals

Port of Wilmington

- Containers, bulk, breakbulk
- Roll-on/Roll-off
- 284 acres
- Navigation channel: 42 ft.
- Accommodate 1,200+ ft. LOA & 158 ft. beam vessels
- 1 million sq. ft. of covered storage & 125 acres of open storage



Port of Wilmington – Wood Pellets



Port of Wilmington – Wood Pulp



Port of Wilmington – Wood Chips



Port of Morehead City

- Bulk, breakbulk and Ro/Ro
- 128 acres, plus an additional 150 acres on Radio Island
- Navigation channel: 45 ft.
- 9 Berths with 5,366 ft. of wharf frontage
- More than 1 million sq. ft. of storage space
- Rail served by Norfolk Southern

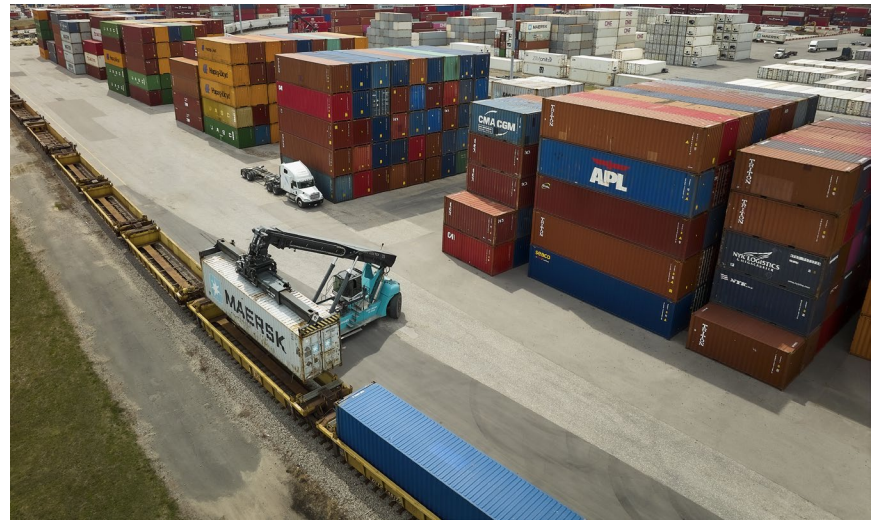


Port of Morehead City Log Yard



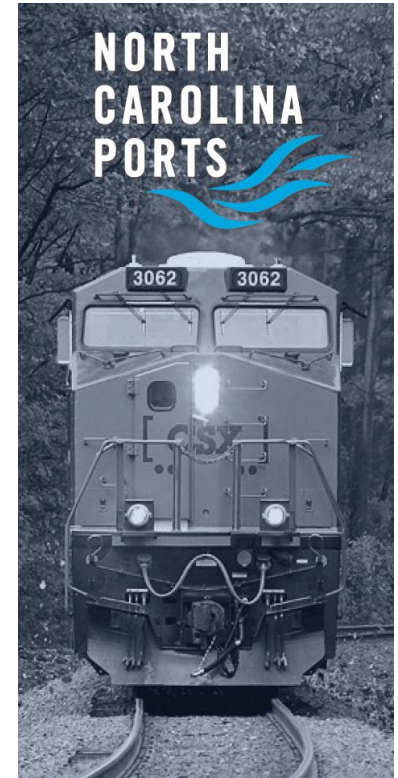
Charlotte Inland Port

- 20 acres
- Accommodates 2,000 grounded/wheeled containers
- Serves as staging area for empty and loaded containers
- Serves I-85 & I-77 corridors
- Onsite maintenance & repair services



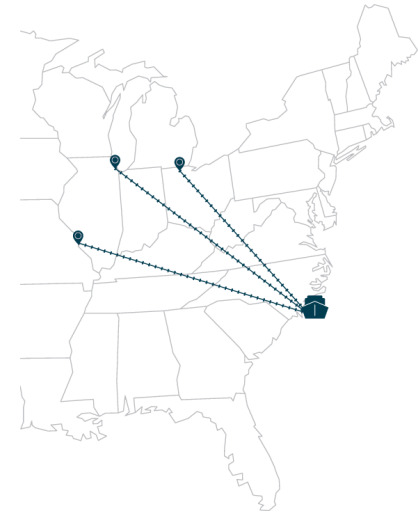
Queen City Express

- Provides direct rail service moving double-stacked containers between the Port of Wilmington and Charlotte
- **Advantages:**
 - Lower transportation costs
 - Shortest direct rail service connecting Greater Charlotte Region
 - Shortens first and last mile transit
 - Reduces emissions
 - No dwell time at Port of Wilmington or Charlotte Inland Port (CIP)
 - Flexible staging and easy access at CIP



Wilmington Midwest Express

- Announced November 2021
- Operated by CSX via Rocky Mount, NC Carolina Connector Intermodal Rail Facility
- Competitive rates, combined with no port congestion and no rail dwell making it the fastest ship-to-rail service on the East Coast



Import		
Chicago	→	5 days
NW Ohio	→	5 days
St. Louis	→	7 days

Export		
Chicago	→	4 days
NW Ohio	→	4 days
St. Louis	→	6 days

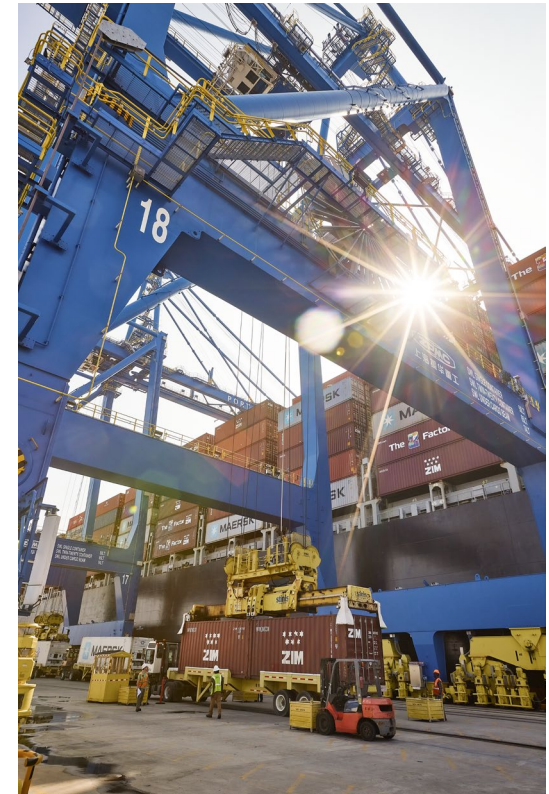
Defining Performance Excellence

2021 Container Port Performance Index (CPPI)

- **#1** North America for ports under 500,000
 - TEUs annually
 - **#4** North America
 - **#49** Globally (out of 370 ports)
-

Metrics Driven

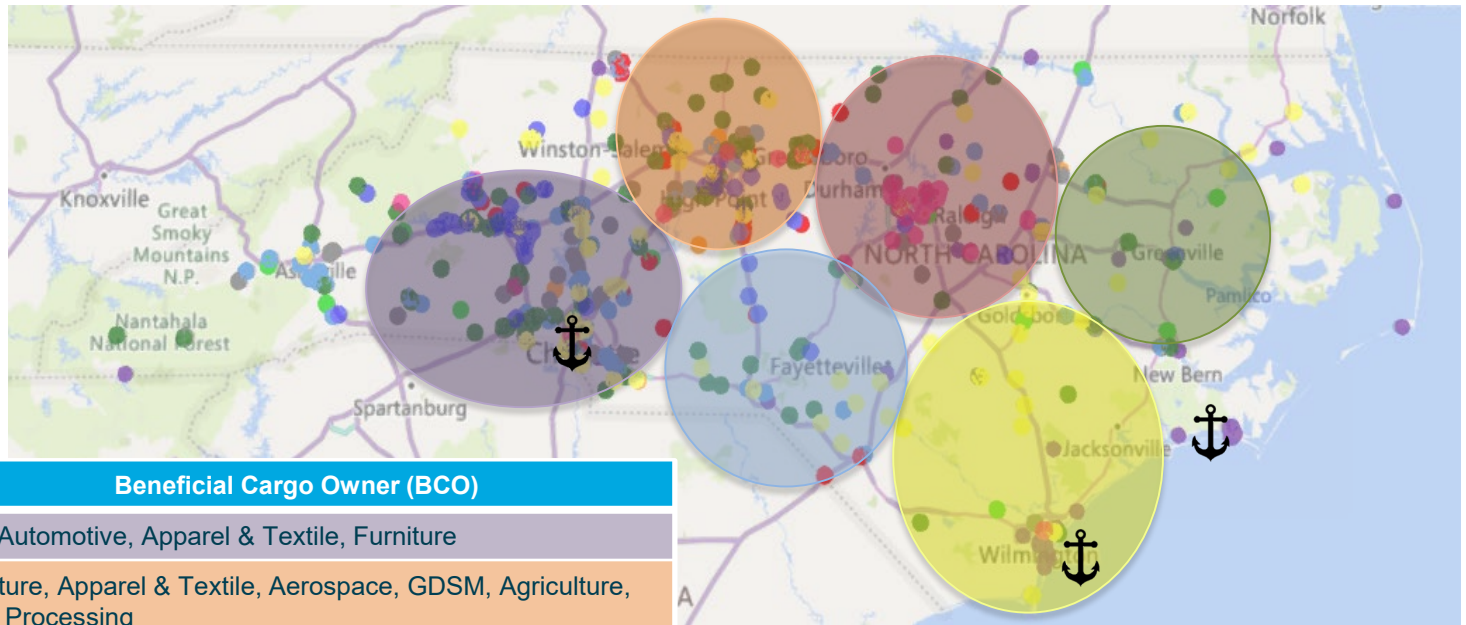
- Vessel productivity – **39** net moves per hour
- Gate productivity
 - Single turn – **22** minutes
 - Dual turn – **33** minutes



Ocean Carrier Coverage

Current	Targets
Trade Sectors <ul style="list-style-type: none">• North Asia/North China• Northern Europe• Central America• Caribbean• South America	Trade Sectors <ul style="list-style-type: none">• South China/Southeast Asia• India-Subcontinent/Middle East• West Coast of South America• Mediterranean• Dominican Republic• North Europe
Carriers <ul style="list-style-type: none">• Crowley• ICL• SeaLand• THE Alliance• 2M+Z	Carriers <ul style="list-style-type: none">• ACL• Dole• Ocean Alliance• PIL• Seaboard• SM Line• Turkon• Wan Hai

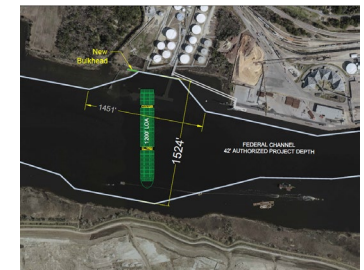
Diverse & Robust Local Market



Region	Beneficial Cargo Owner (BCO)
Greater Charlotte	DIY, Automotive, Apparel & Textile, Furniture
Piedmont Triad	Furniture, Apparel & Textile, Aerospace, GDSM, Agriculture, Food Processing
Research Triangle	GDSM, Pharma, Life Sciences, Agriculture, Chemicals, Automotive
Greater Fayetteville	Chemical, DIY, Rubber, GDSM, Apparel & Textile, Agriculture, Defense
Southeastern	Agriculture, Apparel & Textile, Defense, Food Processing
Northeastern	DIY, Pharma, Life Sciences, Agriculture, Aerospace, GDSM

Capital Improvements

Project	Status
Berth Expansion	Complete
212' Air Draft Clearance	Complete
3 Neo-Panamax Cranes	Complete
Turning Basin Expansion – Phase II	Complete
Gate Complex + Terminal and Gate Operating Systems + Customer Access Portal + Chassis Yard	Complete
Refrigerated Container Yard Expansion	Phase I Complete Phase II In Progress
Container Yard Expansion Master Plan	In Progress
Wilmington Harbor Navigation Improvement Project	Conditionally Authorized



Container Yard Expansion Master Plan

- Constructing to accommodate 1.2M TEU capacity
- Current yard utilization at 50%
- Completed work includes:
 - 3 neo-Panamax cranes
 - New South Gate Container Complex, incorporation of new TOS/GOS
 - Berth expansion



South Gate Container Complex

- Opened in February 2022
- Features:
 - Increased inbound lanes for truck traffic to 7, outbound lanes to 6
 - RFID technology, weigh-in-motion scales, optical character recognition
 - New terminal and gate operating systems
 - Connectivity with Customer Access Portal (CAP)
 - New container operations building



Refrigerated Container Yard



Project Details

- \$14M
- 27 reefer racks
- 180 x 40' ground slots
- Currently has 760 fixed plugs (phase II will add 720 additional)
- New reefer service area

Wilmington Harbor Navigation Improvement Project (WHNIP)

- The Wilmington Harbor Navigation Improvement Project is underway and additional environmental and impact studies have been initiated.
- As a part of this project, improvements will be made to the current post-Panamax container cranes.



Looking Toward the Future

- Continued growth of cargo volumes
- Expand the global coverage of vessel services
- Engage and support state-wide economic development projects
- Develop the talent pipeline
- Build the NC Ports brand



2202 Burnett Blvd., Wilmington, NC 28401 | 800-334-0682 | ncports.com